

Comprehensive  
System View

Real-Time Alerts

Multi-Display  
Global Adjustments

Cloud-Connected

Visual Health  
Map



On-site | 1RU



Virtual Appliance

Megapixel VR's OMNIS® Platform provides aggregated, real-time health monitoring of large-scale video displays, projectors and distribution systems. A single OMNIS can monitor hundreds of LED processors on-premises or in the cloud with a single health map view. Combine multiple units via cloud-based connection to access an on-demand centralized view of over one billion pixels from any location.

Name	Serial	Input	Input Size	Status	Version
W3P0	SN0000P	(SD) 1920x1080@60	1920x1080 @ 0.0	Primary	firmware: 1.0.0
W3P1	SN0001P	(SD) 1920x1080@60	1920x1080 @ 0.0	Primary	firmware: 1.0.0
W3P2	SN0002P	(SD) 1920x1080@60	1920x1080 @ 0.0	Primary	firmware: 1.0.0
W3P3	SN0003P	(SD) 1920x1080@60	1920x1080 @ 0.0	Primary	firmware: 1.0.0
W3P4	SN0004P	(SD) 1920x1080@60	1920x1080 @ 0.0	Primary	firmware: 1.0.0
W3P5	SN0005P	(SD) 1920x1080@60	1920x1080 @ 0.0	Primary	firmware: 1.0.0
W3P6	SN0006P	(SD) 1920x1080@60	1920x1080 @ 0.0	Primary	firmware: 1.0.0
W3P7	SN0007P	(SD) 1920x1080@60	1920x1080 @ 0.0	Primary	firmware: 1.0.0
W3P0	SN0000P	(SD) 1920x1080@60	1920x1080 @ 0.0	Primary	firmware: 1.0.0



**Centralized Processor Monitoring and Control**  
Including Brightness, Gamma, Blackout & Freeze

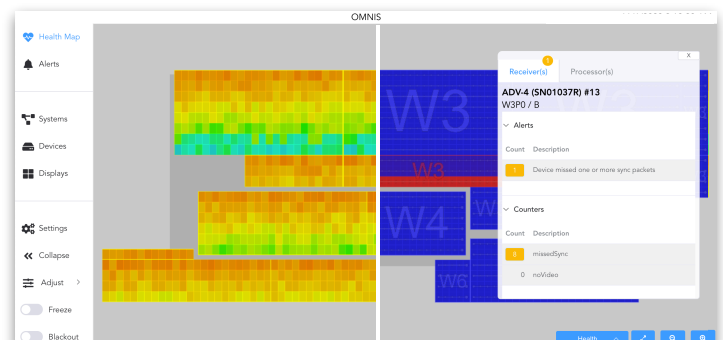


**Real-Time Single View of AV-over-IP Distribution**  
Monitor port link status for SDVoE networks

#	Severity	Time	Resolved	Device	Message	Tags & Comments
24	Warning	Today 8:52:31 AM		W5-167	Device missed one or more video packets	2
23	Warning	Today 8:52:31 AM		W3-798	Device missed one or more video packets	2
22	Critical	Today 8:52:31 AM		W3-721	Device offline	2
21	Critical	Today 8:52:31 AM		W3-720	Device offline	2
20	Critical	Today 8:52:31 AM		W3-719	Device offline	2
19	Critical	Today 8:52:31 AM		W3-718	Device offline	2



**Continuous Alert Logging**  
Find and flag faults, even those not visible to the eye.



**Thermal, Health, Status and Alert Views**  
Colorized by alert/deviation for quick visual diagnosis.

## Specifications

OMNIS  
(as on-site 1RU device)

via ISAAC  
(as virtual appliance)

### Monitoring

Aggregates up to 200 screen processors into a single map view

### Network

8 x 10/100/1000 Ethernet ports (bridged) for

### Management

4 x 10/100/1000 Ethernet ports  
isolated/bridged (configurable) with monitoring

### (W x H x D in mm/in) Dimensions

1RU | 481.5 x 44.2 x 393 (19 x 1.7 x 16.3)

### (in kg/lbs) Weight

8.9 (12.6)

### Power

100-240VAC, 50/60Hz, 3.8A

### Operating Conditions

Indoor / 5°C ~ 35°C

### API

Application Programming Interface (API) exposing full control and monitoring of OMNIS R1 via JSON-RPC over a REST-style interface. Allows for integration with other external systems.

### (optional) Cloud-Based Monitoring

Centralized and secure remote management of multiple OMNIS systems across multiple locations, through a single pane-of-glass interface.

### Compatible Processing Platforms

Megapixel VR | Revolution Display | Barco | NovaStar | Colorlight (coming soon)

### Compatible Projectors

Panasonic | PJLink Projectors

### Compatible Networking

NETGEAR Managed Switches (SNMP v2)

Device Capabilities		Megapixel VR	Revolution Display	NovaStar	Projection	Networking
Configuration	Display System Redundancy	●	●	*under analysis	N/A	N/A
Display Info	Health Map	●	●	●	●	
	Heat Map	●	●	●	●	
	Switch Ports Map	●	●			●
Display Control	Input	●	●		N/A	N/A
	Test Patterns	●	●		N/A	N/A
	Blackout	●	●	●	N/A	N/A
	Freeze	●	●	●	N/A	N/A
	Brightness	●	●	●	N/A	N/A
	Gamma	●	●	●	N/A	N/A
Device Info	(type, version, S/N) Device Data	●	●	●	●	●
	Input Settings	●	●	●	●	
	Device Status	●	●	●	●	●
	Port Configuration	●	●	●		●
Processor Alerts	Input Source Error	●	●		N/A	N/A
	Output Error	●	●		N/A	N/A
	Processing Error	●	●		N/A	N/A
	Sensor Error	●	●		N/A	N/A
Tile Info & Alerts	(type, version, S/N) Tile Data	●	●		N/A	N/A
	(type, version, S/N) Receiver Card Data	●	●	●	N/A	N/A
	Temperature	●	●	●	N/A	N/A
	Voltage	●	●	●	N/A	N/A
	Tile & Network Link Errors	●	●		N/A	N/A
	Sensor Errors	●	●		N/A	N/A
Additional Alerts	Projector Lamp Status	N/A	N/A	N/A	●	N/A
	Networking Ports Map	N/A	N/A	N/A	N/A	●
	Ports Status	N/A	N/A	N/A	N/A	●
Display/System Alerts	Active	●	●	●	●	●
	Deviation from Baseline	●	●	●	●	●
	Historical Log	●	●	●	●	●
	Alert Notes & Tags	●	●	●	●	●
Additional Features	Web API	●	●	●	●	●
	Cloud Monitoring	●	●	●	●	●
Supported Models		HELIOS	M8	MCTRL4K   VX4S	Panasonic PJLink Supported	NETGEAR Managed Switches (SNMP v2)